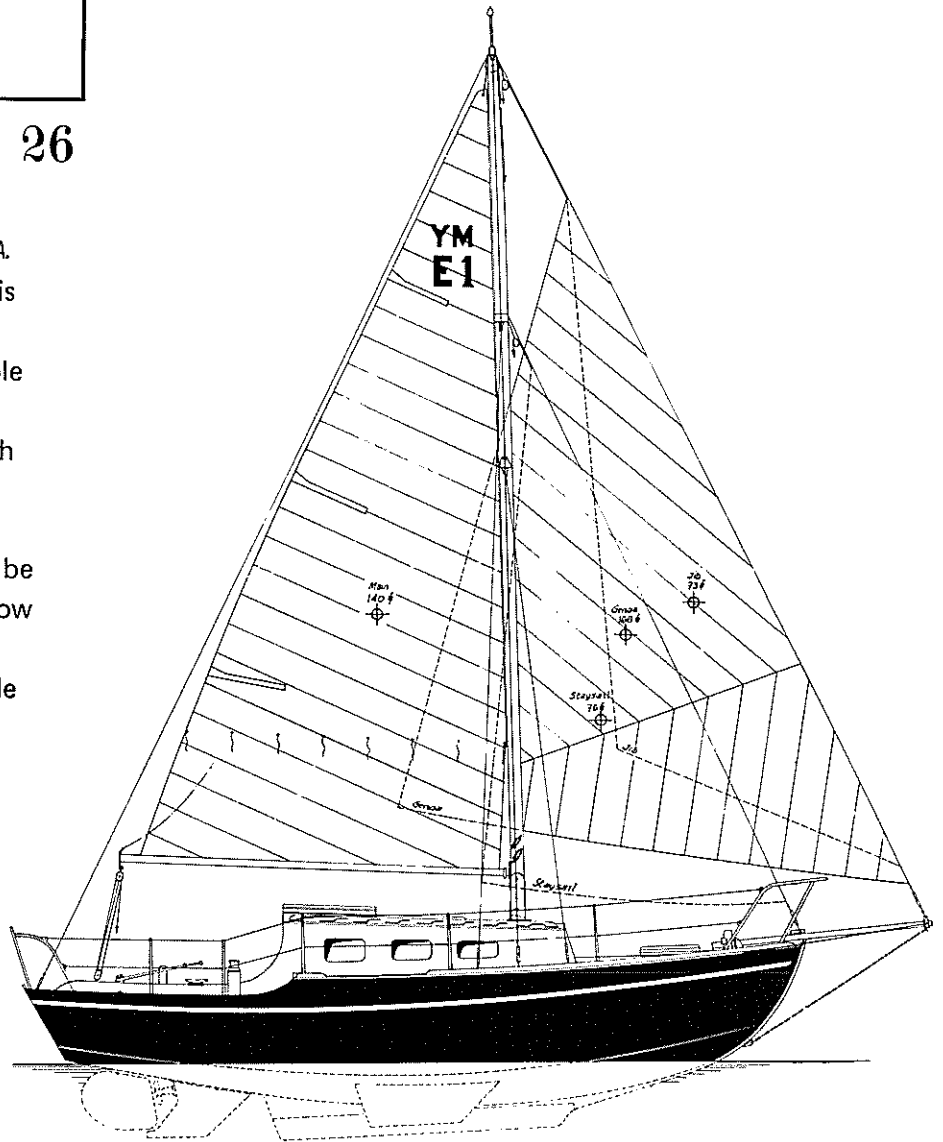


YACHTING MONTHLY

EVENTIDE 24 & 26

The Y.M. Eventide was designed in 1958 by Maurice Griffiths, *G.M., A.I.N.A.* then the editor of Y.M. The hull is of V-bottom, or single chine form and designed to be built with double skin, (diagonal inside and fore and aft outside planking) or planked with Marine Plywood.

The Eventide has been designed to be stiff, roomy on deck as well as below and well able to face conditions offshore, to the extent of being able to right if ever knocked down. The plans give details for bilge keel or fin keel as an alternative. The bilge keel model is for those who want a shallow draft boat that will sit on an even keel on the foreshore or trailer and make scrubbing and maintenance generally as easy as may be. The fin keel version is for those who have easy berthing facilities and prefer a keel boat.



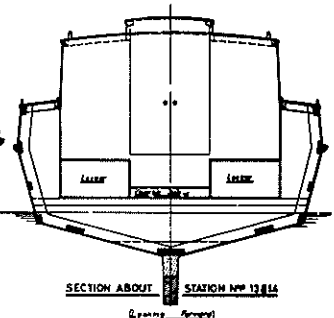
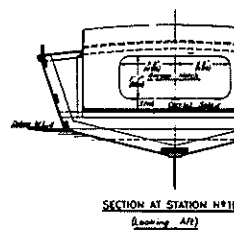
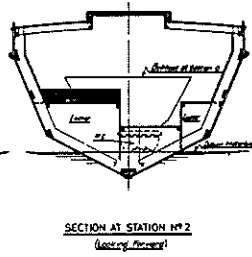
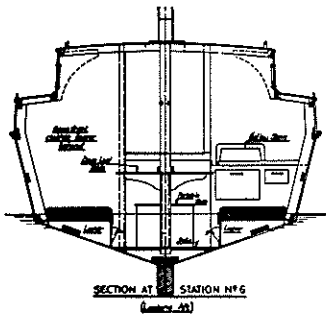
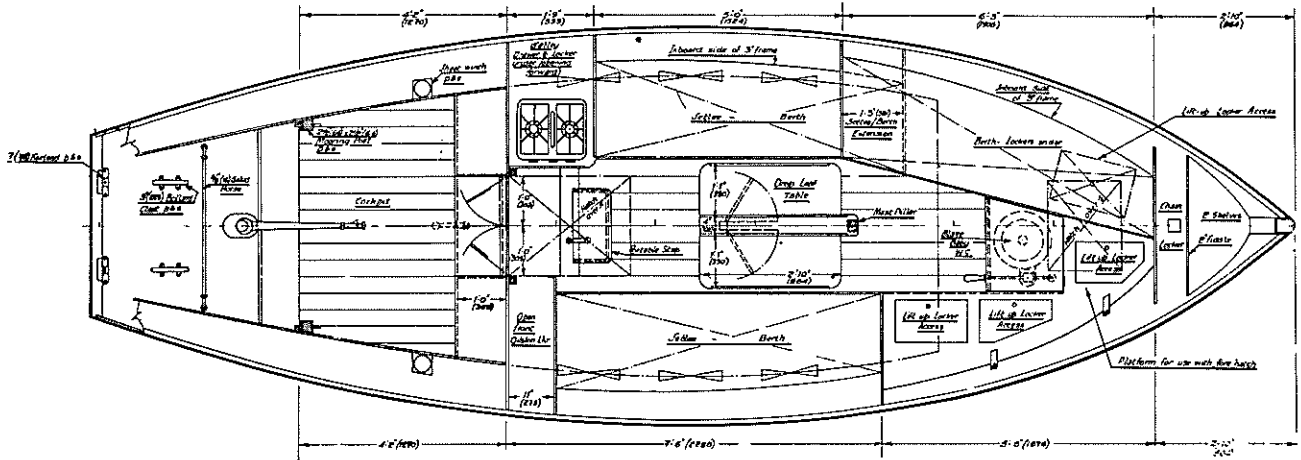
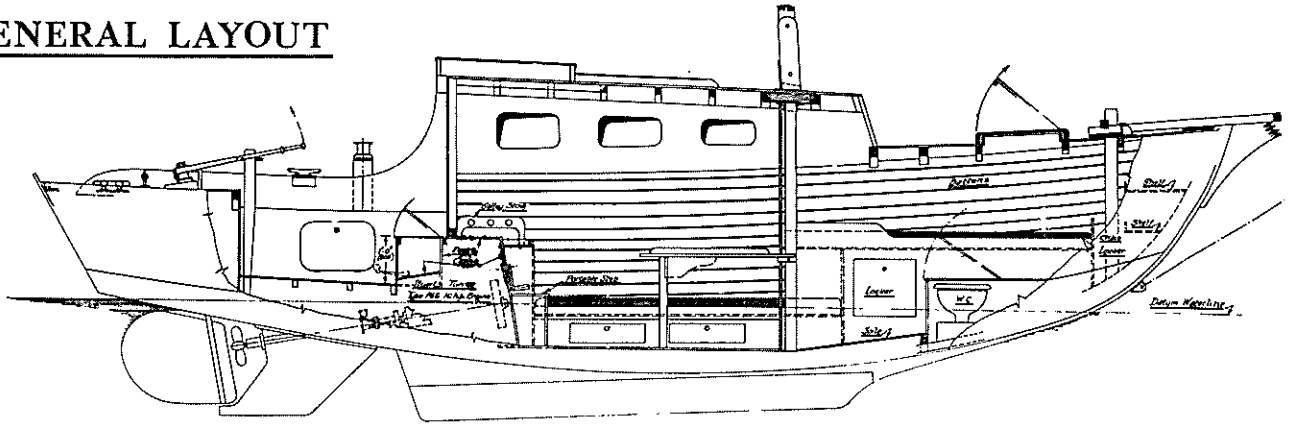
The Eventide is of the raised deck type, the space below will surprise those who have never seen this type of cruising boat before. The accommodation layouts are planned for either three or four berth, with room for a marine toilet forward between the foc'sle berths and an oilskin locker aft opposite the galley. A drop leaf table is drawn for the space between the settees. In the cabin there is approx. 5' 6" headroom between the beams and full sitting headroom over the cabin settees. The cockpit is over 4' long and big enough for four adults in comfort. The rudder is drawn as inboard, at the aft end of cockpit, but there is an alternative drawing for a transom hung rudder. There is a large stern locker, for stowage. The fore hatch is of the M.G. double coaming drip proof type, the mast is easily lowered, being mounted on deck in a substantial tabernacle. A bowsprit is standard. For motive power a number of engines may be used, between 6 and 10 b.h.p as a general guide .

The 26' version is very similar in design to the 24', but with redesigned heavier keel and larger sail area.

Instructions for building the Y.M. Eventide are contained in 'Building Chine Boats' by Michael Verney, obtainable only from the 'Eventide Owners Association'.

Hundreds of these fine vessels have been built, and many have completed long passages, even ocean crossings.

GENERAL LAYOUT



APPROXIMATE DIMENSIONS

	24ft version	26ft version
Length on deck	24ft	26ft
L.O.A. (Bowsprit)	28ft	30ft
L.W.L.	20ft	22ft
Beam	8ft	8ft
Draft (Bilge)	2ft 9in	3ft
Draft (Fin)	4ft 6in	4ft 6in
Displacement	4000lb	6000lb
Sail Area	216-342 sq.ft	270-448 sq.ft.
Ballast	1020lb.	1650lb