

TIDEWATER

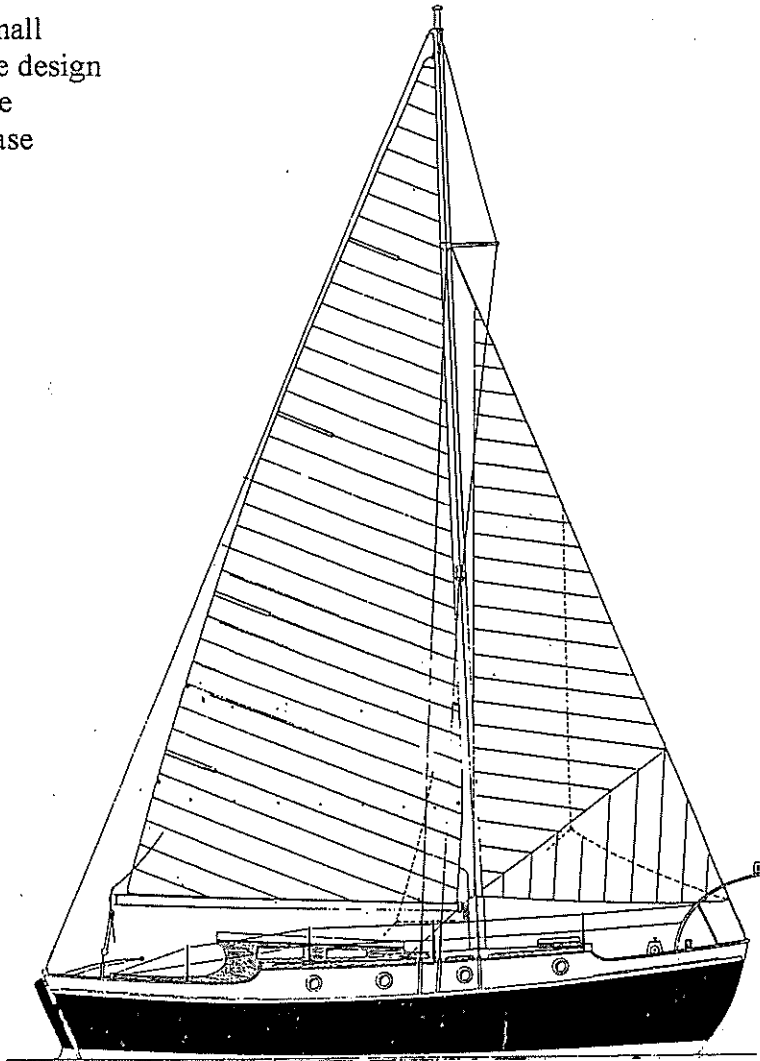
Length OD	30ft
Beam	9ft 6ins
Draught	3ft 5ins

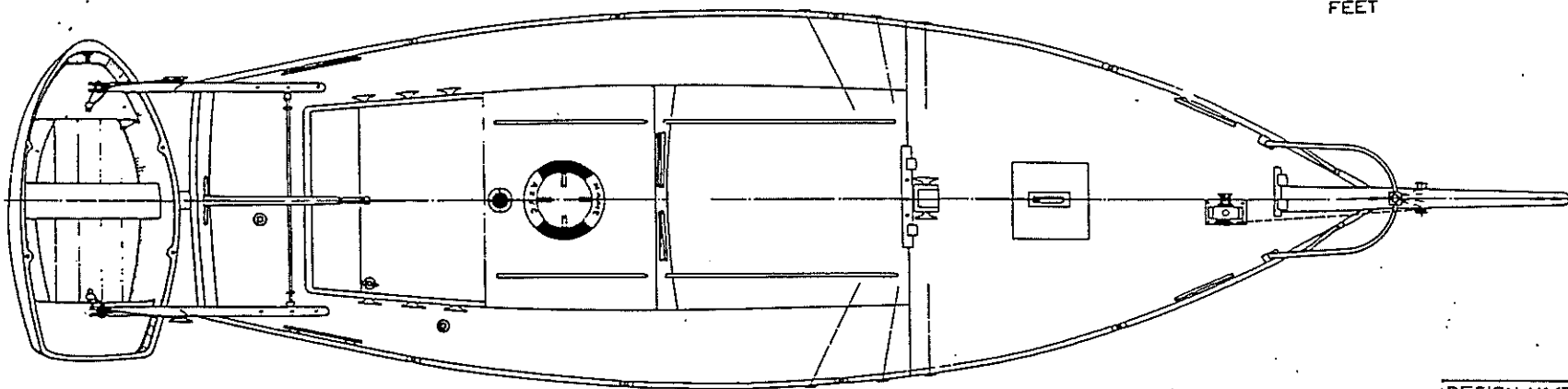
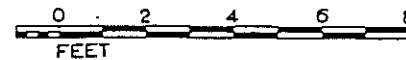
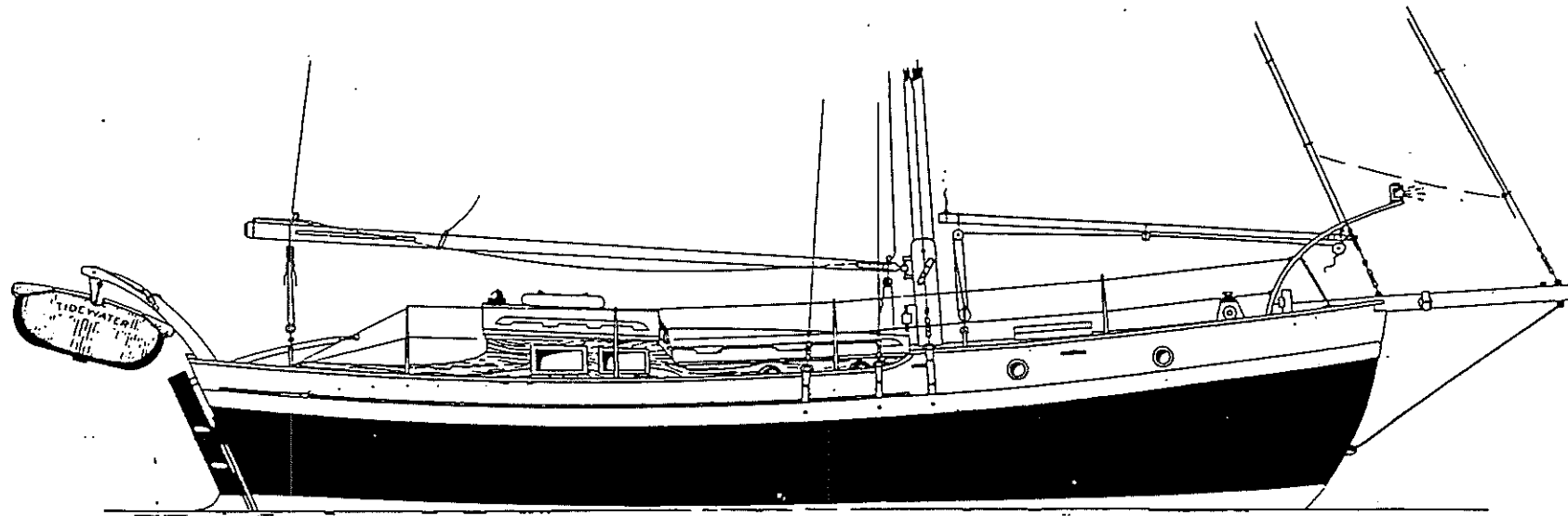
The Tidewater is a traditional round bilge hull with a long keel and bilge keels, of shallow draught with a transom stern and is somewhat similar to the Lone Gull II design but a size larger.

The original deck plan followed that of the Lone Gull II arrangement with the raised deck amidships and carried far enough forward of the mast to contain the double coaming forehatch. However, a new deck layout was drawn up with a raised foredeck giving full headroom in the forecabin.

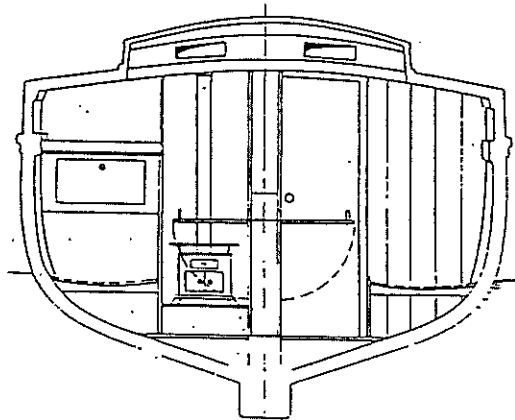
The rigs adopted by Tidewater owners have ranged from the conventional stem-head Bermudian sloop (with a tendency to carry a fair amount of weather helm) and Bermudian Cutter with a short plank bowsprit to Gaff Cutter rig, a Wishbone Schooner rig and a Junk rig.

The demand for a small Ferrocement yacht led to the design being adapted to produce the "Blue Water" with an increase of draught.

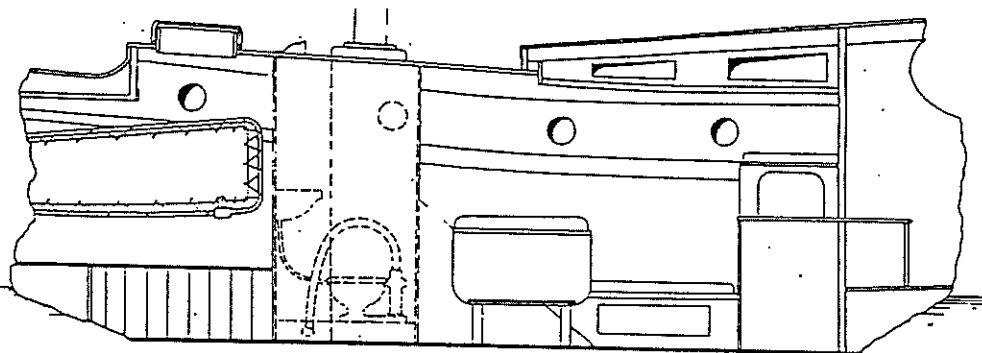




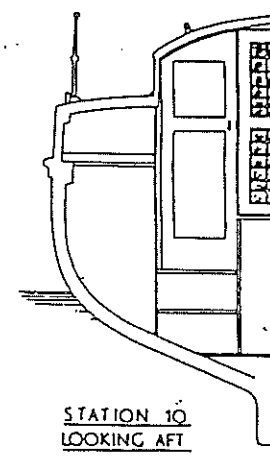
DESIGN N° 177 ~ COPYRIGHT ~	
L.O.A. 30'-0"	BEAM 9'-6" DRAFT 3'-0cb
L.W.L. 26'-2"	3'-4bk
FISHER BOAT PROFILE & DECK PLAN	
SHEET N°	MAURICE GRIFFITHS
8 FB.	AJNA.



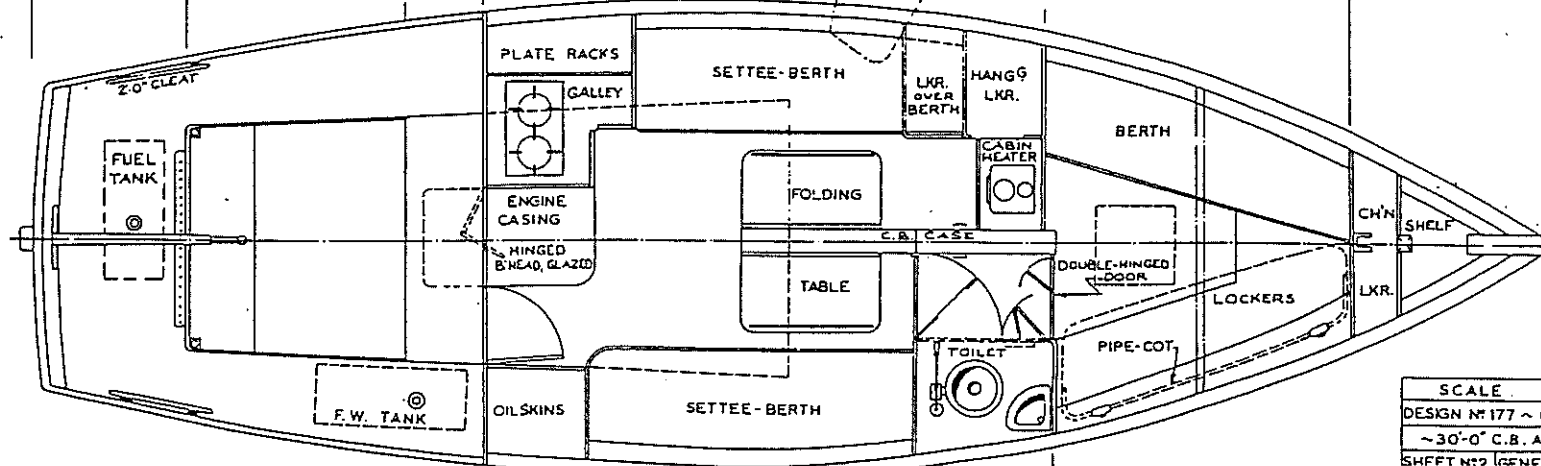
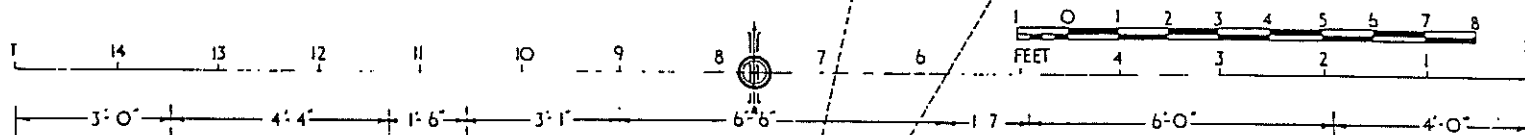
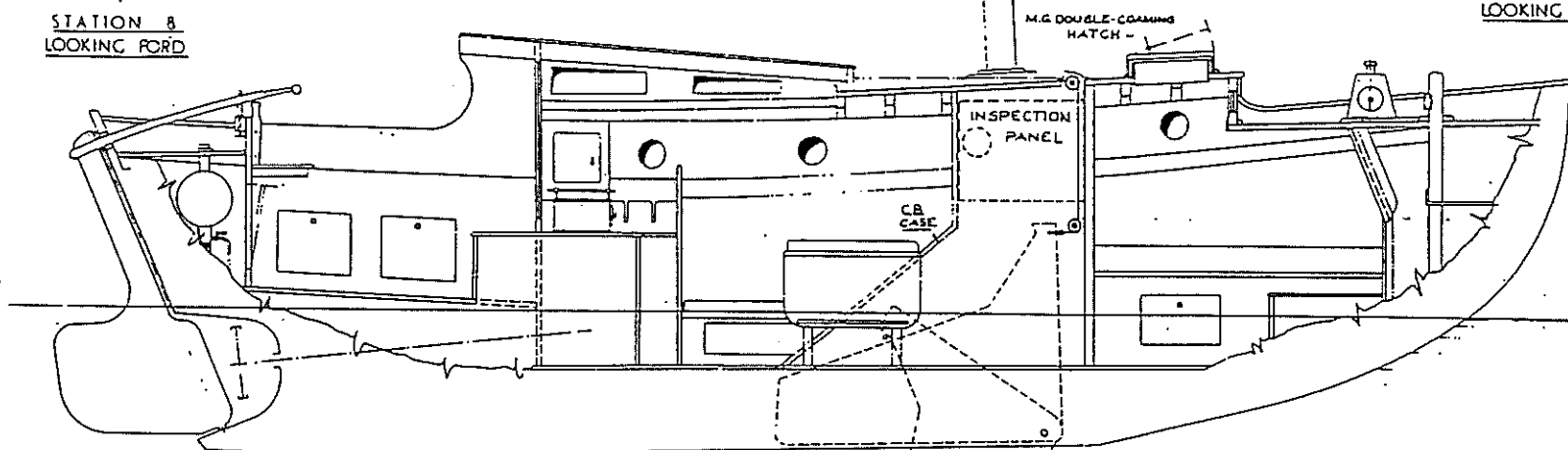
STATION 8
LOOKING FORD



ELEVATION LOOKING TO STARBD.



STATION 10
LOOKING AFT



SCALE 1" = 1 FOOT
 DESIGN N° 177 ~ COPYRIGHT ~
 ~30'-0" C.B. AUX. CUTTER~
 SHEET N° 2 GENERAL ARRY ~